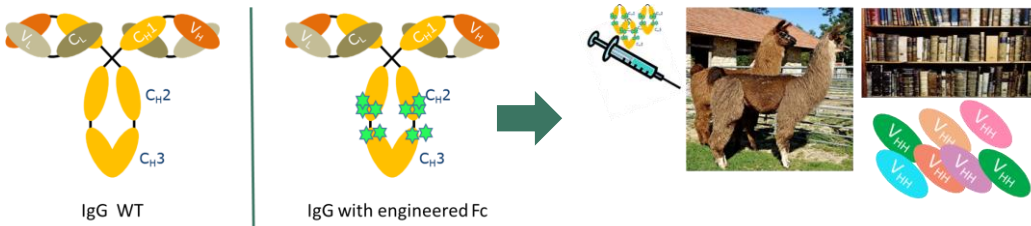


# Case study II

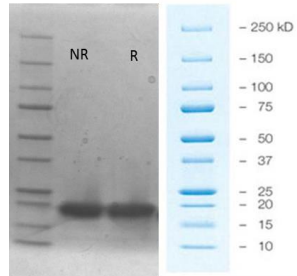
Generation of tools to evaluate and develop IgG with engineered Fc for modulation of Fc-receptor functions



Need of tools to differentiate!

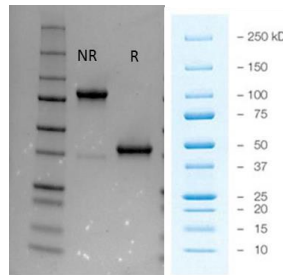
Llama immunization and VHH Phage display library construction

VHH produced in *E. coli*/TALON purification



1-Mar-16

Fc-VHH produced in HEK cells /protA purification



NON-CONFIDENTIAL

CDR3 VHH (Family #)	ELISA results (O.D. 450 nm)	
	WT IgG	Fc-engineered IgG
1	0.075	3.078
2	0.061	0.468
3	0.063	0.425
4	0.087	0.354
5	0.056	0.389
6	0.094	1.373
7	0.06	0.324

Phage display counter selections, ELISA with soluble VHH in bacteria crude extracts and sequencing

Cloning, production and purification